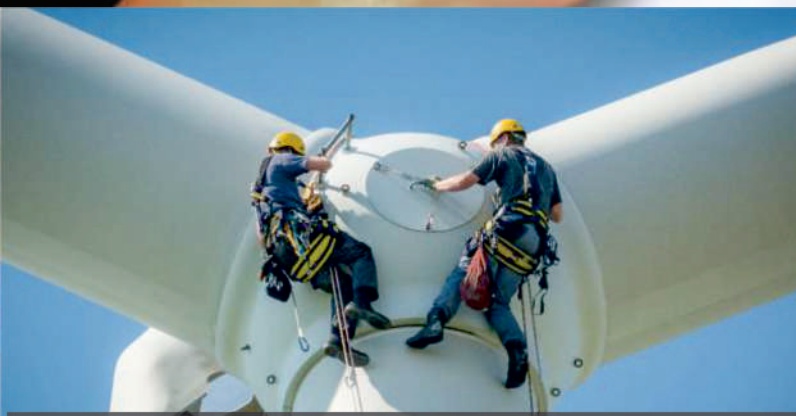


**Articulated Ruggedised Industrial Videoscope****2024-25**

**Take Your  
Inspection  
to New Levels**



**Cutting edge technology Industrial Videoscopes / Fiberscopes for Inspection of :  
Automotive. Aircraft. Aerospace. Process Industries.  
Power Generation . Wind turbines. Boiler Inspections.  
Construction. Security / Rescue.**

**Quality in Construction. Delivered.**



# Industrial VideoScope | X2000



## Clearness | Sharpness | Brightness

**High Performance Industrial HD Video Borescope** for demanding customer who need Articulated probes with **Flexibility** and power on the go. X2000 is lightweight, rugged and provides **high-resolution images** and **advanced imaging functions** that allow workers to fulfill their tasks in **even the most challenging environments**.

The X2000 High performance HD videoscopes are in association with MITCORP, Taiwan-used by worlds leading companies who require inspection of complex or technical applications with super resolution videos & photos



## High Durability-Long Life

**Temperature & Scratch Resistant | Tungsten Braided Probes**

**4 Way Articulating Probes**

Choose from dual view probe or front view probe options featuring a protective tungsten-braided outer layer, enhancing its durability and longevity. The robust and dense tungsten construction significantly extends the probe's lifespan, making it **waterproof, heat-resistant up to 100°C**, and **resistant to scratches and corrosion**. With an **IP67** rating, it is also **operable** when exposed to machine oil, etc, ensuring reliable performance in various challenging environments.



# Industrial VideoScope | X2000



**Clearness | Sharpness | Brightness**

## **X2000 Controller Console Product Characteristics** **Designed for portability & Versatility**

### **Efficiency**

The X2000 features robust file management and annotation tools, aiding technicians in capturing images and videos for maintenance documentation.



- 7" LCD touchscreen
- Innovation Screen Share

### **Durability**

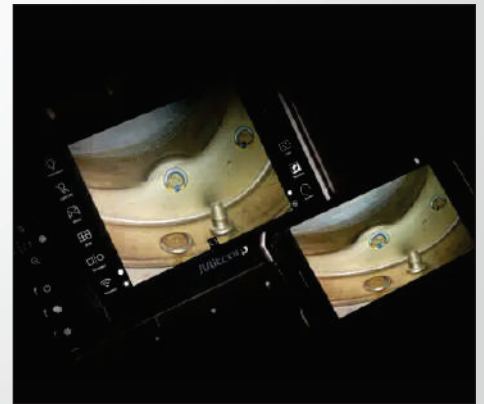
Videoscopes must be durable in harsh conditions. Our IP67 tungsten probes withstand abrasion and heat, while the X2000 console offers IP54 and military-standard protection.



- heat resistance of up to 100 degrees
- Drop resistance of up to 1m in height.

### **Quality**

Especially in highly complex or technical applications, videoscopes need to take sharp images even in demanding environments, such as shiny metallic or oily surfaces.



- super-resolution images (2560\*1440)
- high-quality videos (1920\*1080)

### **Ergonomic :**

- Lightweight Control Console : Only 1.2kg
- Shoulder strap & roll up tubes
- Interchangeable probes & batteries
- One-Handed operation
- Detachable 5" screen on module
- Custom Button on Joystick

### **Connectivity :**

- Wi-Fi, HDMI, USB type C output supported
- Videoscope Mobile App for remote viewing
- GPS mark on photos

### **Additional Camera :**

- Backside camera with GPS for capture of object being inspected , for records.
- Backside LED flashlight function

### **Report Generation Software - Productivity :**

- SESSION/TAG Image Storage Settings
- Comprehensive Photo Annotation Function
- Report Assist Software
- New launched "Insight" report generation & GPS Mapping Software. (Optional)

### **True Sight :**

- Super Resolution
- Fine Image Quality
- Advanced Imaging Functions



# Industrial VideoScope | X2000

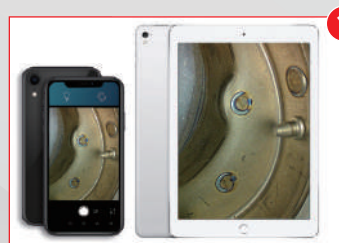


**Clearness | Sharpness | Brightness**

## Connectivity

**Benefit from Multi-Connection Solutions**

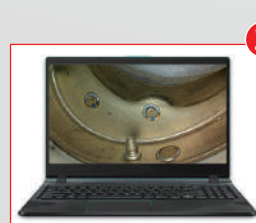
**Versatile Output Connectivity Options:** View & Share Pictures or Videos



Use Wi-Fi & mirror viewing on Tablet



Use SD Card



USB Type C Connectivity

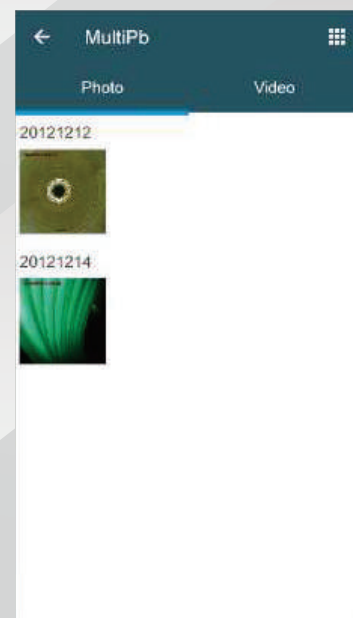
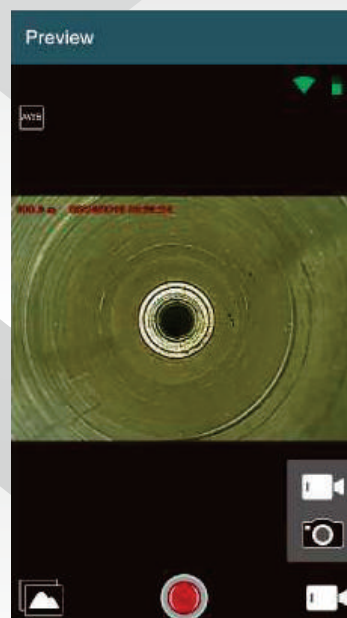
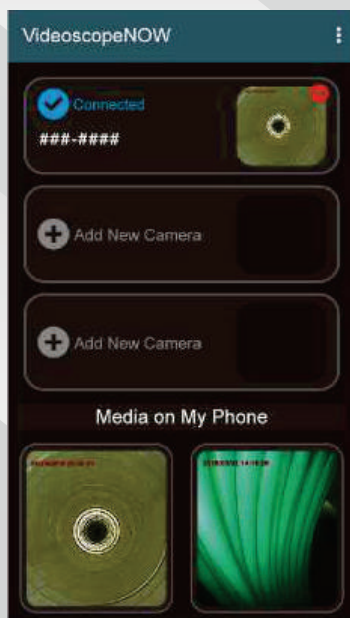


HDMI Probe to TV view HD quality images

## Comprehensive Solutions

### Controllable Via App

The X2000 can link with mobile devices via the Videoscope Now Mobile App. The app lets you control the X2000 remotely and download photos and videos onto your device.





# Industrial VideoScope | X2000



**Clearness | Sharpness | Brightness**

## Best Image Viewing Experience

The X2000 features a 7" LCD touchscreen that delivers not only crisp and clear images but also features a manual exposure which works very similar to that of a smartphone. This makes it not only very helpful but also very convenient to use.

## Excellent User Interface

A vast range of different functions ensure the best user experience, catering all your individual needs for your next inspection.



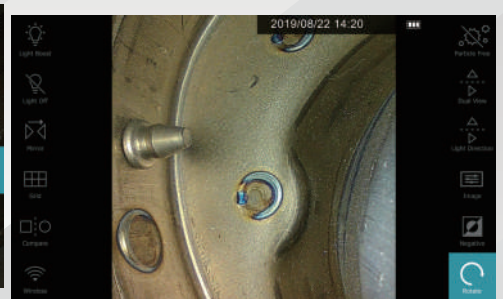
Manual exposure by Fingertip



Front/Side Dual view once (with mirror)



Supports image sharpness fine tuning



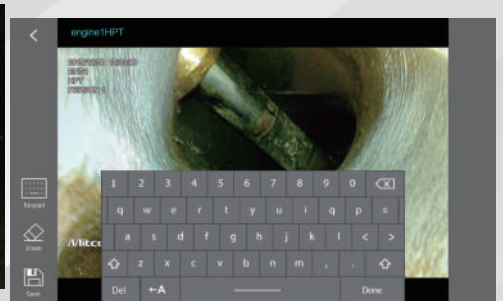
Rotate the live view clockwise to get visual angle



3 Stage temperature warming & auto shut down function



Patented particle free effect (with mirror)



Editable image annotation

## FOV: Wider Than Ever Before

The enhanced field of view (FOV) based on HD lenses allows you to see in a wider angle than ever before. Especially in combination with the shorter probe tip and the large articulation angle of our probes, it allows for a comprehensive inspection during which no flaw will remain undetected.



2560\*1440 output by 6.0 mm HD probe (30 mm distance)



1600\*1600 output by 3.9 mm HD probe (30 mm distance)

## DOF (Depth of Field)

The depth of field (DOF) needed for an inspection, can vary depending on the application field for your videoscope. Airplane turbines for example need a different focal length than the engine block of an automotive. Mitcorp offers a variety of different focal lengths to fit your needs.



2560\*1440 output by 6.0 mm HD probe (10 mm distance)



2560\*1440 output by 6.0 mm HD probe (10 mm distance)



# Industrial VideoScope | X2000



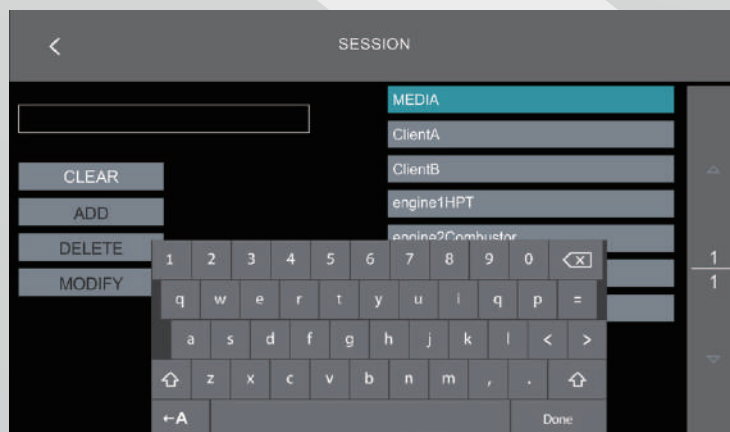
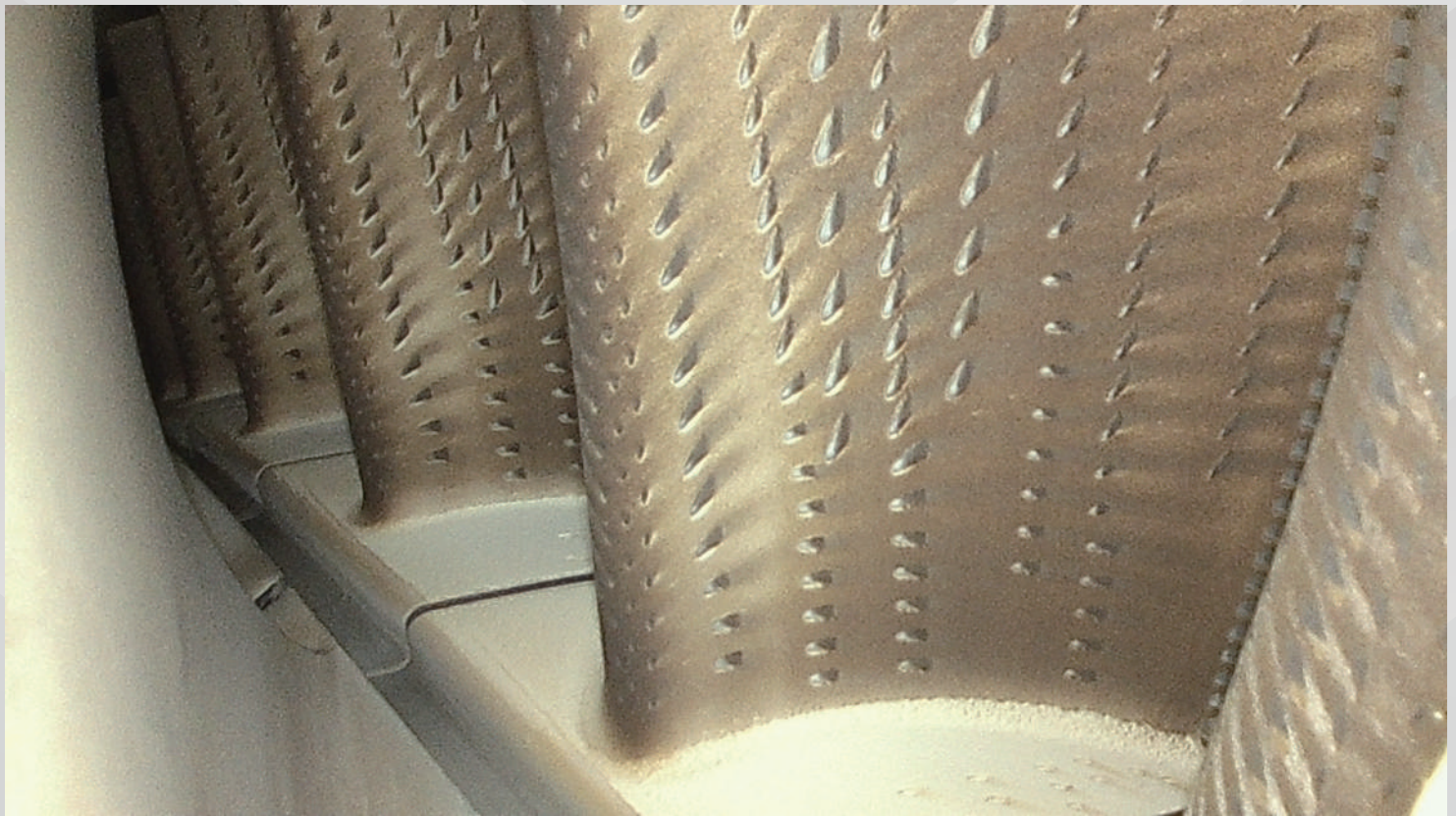
**Clearness | Sharpness | Brightness**

## Advanced File Management: Productivity

The X2000 HD offers a file management system which allows you sort your footage into folders, to tag them and to add notes or annotations. This makes keeping track of all your inspections easy and convenient

The X2000 HD videoscope is a perfect companion for this challenging task. In this case the X2000 system was used in combination with one of our 6 mm articulation probes. Not only does this combination provide high quality videos but also outstanding image quality of 2560\*1440 pixels.

Optional small diameter of 3.9 mm and the 120° field of view as well as the 140° bending angle allow the technician to move the probe freely within the area to be inspected.





# Industrial VideoScope | X2000



**Clearness | Sharpness | Brightness**

## Specifications :

X2000 Control Console Unit	
Display	7" LCD / 1024*600
Batteries / Power supply	Li-ion Rechargeable 9800mAh / 100V~240V, 120V 2.5. 50-60Hz
HDMI	TYPE D; HDMI 1.4 transmitter with 3D format and CEC support
USB	USB TYPE C, supporting USB full-speed and high-speed data transmission
Wi-Fi	IEEE 802.11B / G
Water Resistance / Drop Rating / RH	IP57 / 1m / 95% RH
Operating / Storage temperature	In air 0~45°C, with AC power adapter: 0~40°C, charging temp:0~35°C / -10°C~70°C
Insert tubes interchangeability	6.0 mm HD series; 3.9 mm HD series; 2.8 mm
Software features	
Image features	Digital zoom 3X, 10 steps brightness control
Image effect	Clarity-on / off
Annotation	10 text annotation (24 characters)
Timestamp / watermark	For snapshot / video recording (on / off)
Image management	User define pic / video folder available
Image display functions	Light boost, light off, mirror, grid, compare, wireless, particle free, dual view, light direction, auto white balance
White balance	Manual adjustable (default, calibration, custom)
Recording management	
Storage media	SDHC micro card
Overlay	YY / MM / DD h:m, battery capacity
Thumbnail image display	9 grids album mode
Image Resolution	2560*1440 (S-HD); 1280*720 (HD)
Images Recording format	.jpg
Video Resolution	1920*1080
Video Recording format	.mov / H.264
Video Audio input	Built-in microphone (on / off)
Frame rate	30FPS



# Industrial VideoScope | X2000



**Clearness | Sharpness | Brightness**

**True Sight : 360° Articulated Probes**

**Bending Angle upto 140°. Super Resolution & Fine Image Quality**

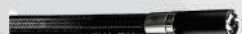
**Probe options : Configure your X2000 with probe meeting your application requirement**



**6.0mm Probe (front view)=Still image & video output resolution:2560x1440**



**3.9mm Probe (front view / Dual View)=Still image & video output resolution:1600x1600**



**2.8mm Probe (front view)=Still image & video output resolution:800x800**

Models Options	60D4W-F_TU-M	60D4W-F_TU-F	60D4W-FS_TU-M	39D4W-F_TU-M	39D4W-FS_TU-M	28D4W-F_TU-M
Probe head diameter	6.0 mm			3.9 mm	3.9 mm	2.8 mm
Probe length	2 m / 3 m / 5 m / 7 m		2 m / 3 m / 5 m / 7 m / 10 m	1.5 m / 3 m	1.5 m / 3 m	1.5 m
Probe head length	19.3 mm		2 m / 3 m: 21.5 mm 5 m / 7 m / 10 m: 24.4 mm	13 mm	21.6 mm	10.1 mm
Direction of view	Front view		Dual View Front + Side	Front	Dual View Front+Side	Front
Illumination	Front LEDs		Front / side LEDs	Front LEDs	Front / Side LEDs	Front LEDs
Field of view (FOV)	90°		95°	120°		
Depth of Field (DOF)	10 mm~100 mm	25 mm~∞	2 m / 3 m: Front: 8 mm~∞ Side: 7 mm~∞  5 m / 7 m / 10 m: Front: 8 mm~∞ Side: 5 mm~200 mm	5 mm~100 mm	5 mm~100 mm	3 mm~∞
Still image resolution (.jpg)	2560*1440 (S-HD)		(Dual) 2560*1440	1600*1600	(Dual) 1600*1600	800*800
Video resolution (.mov)	1920*1080		(Dual) 1920*1080	1600*1600	(Dual) 1600*1600	800*800
Articulation angle	2 m / 3 m: full ways ≥ 120° 5 m / 7 m / 10 m: full ways ≥ 80°			Full way >140°	Full way >120°	Full way >110°
Operating temperature	In air: -10~100°C ; In water: 10~30°C					In air : -10~80°C In water: 10~30°C
Temperature rating	100°C temperature resistant with 3 level warning at 60°C / 80°C / 100°C					
Probe head material	Stainless Steel					
Probe material	Tungsten braid					
Joystick console dimensions	(WxDxH) 139.4x193x84.2 mm (w/o SR and insert tubes)					
Joystick console buttons	Brightness+, Brightness-, snapshot / record					
Lock and move	Joystick / Unlock switch on console					
Dust and water proof / RH	Joystick console: IP54 ; Insert Tube: IP67 / 95%					
Liquid resistance	Operable when exposed to machine oil, light oil or 5% saline solution					

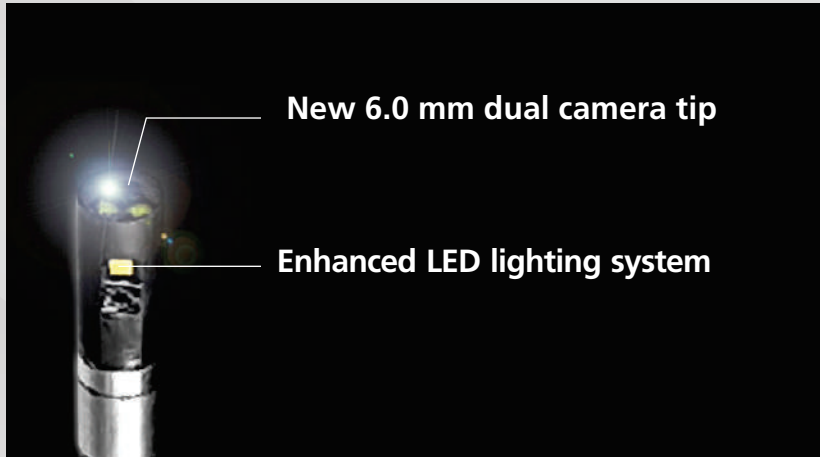


# Industrial VideoScope | X2000



**Clearness | Sharpness | Brightness**

**6.0mm Dual View Camera | 4 Way Articulating**



## Dual Front & Side Camera Dual LED Setup

Dual Front & side camera with light distribution crucial to avoid glare spots and reflections. For that reason, the side view camera has two LED light sources, one below and one above the camera lens, allowing for evenly distributed light in any situation.

Front Camera

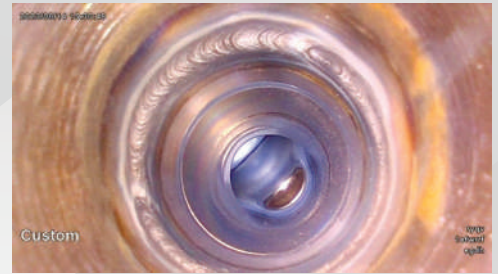
Side  
Camera



## Clear Vision & Sharp Photos

Nothing is more important than to have a clear view and sharp images during an inspection. That is why the 3.9 mm dual view boasts two powerful cameras that will give you a perfect overview and leave no flaw undetected.

- HD resolution
- Wide FOV of 120°
- DOF of 5 mm~200 mm



IP67  
waterproof



100°C  
auto-shutdown



## High-resolution images and videos

Great mobility. Outstanding flexibility. Stunning results.

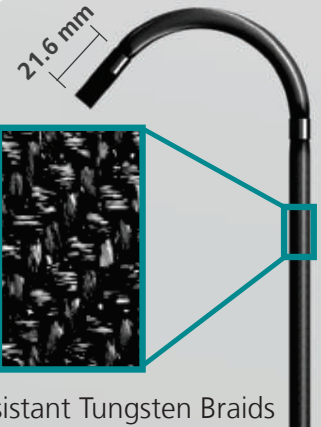
## Rugged & Durability

- IP67 waterproof
- 100°C resist & High temperature warning
- Unyielding to scratches and corrosion

## Sensitive mechanical control articulation

Full way articulation with lock design, mechanic wiring joystick brings you instant feedback and precise angle control.

21.5 mm short tip length and bending radius make your surrounding inspection job extremely comfortable and efficiently.



Scratch Resistant Tungsten Braids



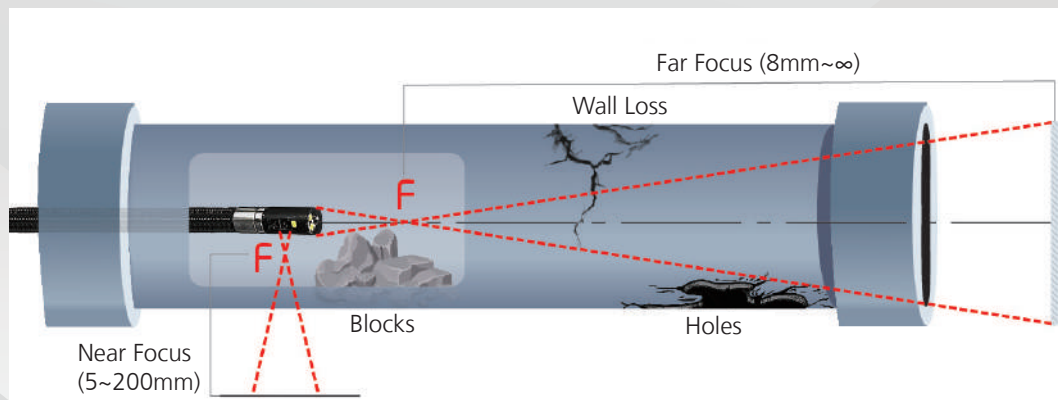
# Industrial VideoScope | X2000



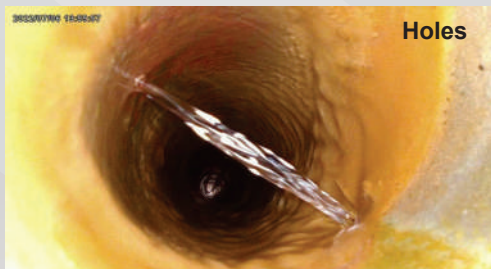
**Clearness | Sharpness | Brightness**

**6.0mm Dual View Camera | 4 Way Articulating**

**Optimized Probe Tip Optical Design**



Long-length probe (5 m/7 m/10 m) tip's sophisticated DOF and FOV Optical design dedicated to tube inspection needs.



**All length by demand**



For all purposes inspection especially long tube objects like heat exchangers.

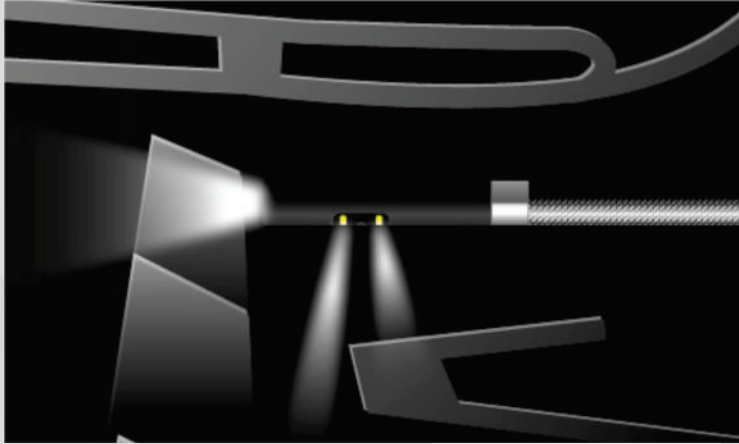


# Industrial VideoScope | X2000



**Clearness | Sharpness | Brightness**

**3.9mm Dual View Camera | 4 Way Articulating**



## Dual Front & Side Camera

### Dual LED Setup

Dual Front & side camera with light distribution crucial to avoid glare spots and reflections. For that reason, the side view camera has two LED light sources, one below and one above the camera lens, allowing for evenly distributed light in any situation.

Front Camera

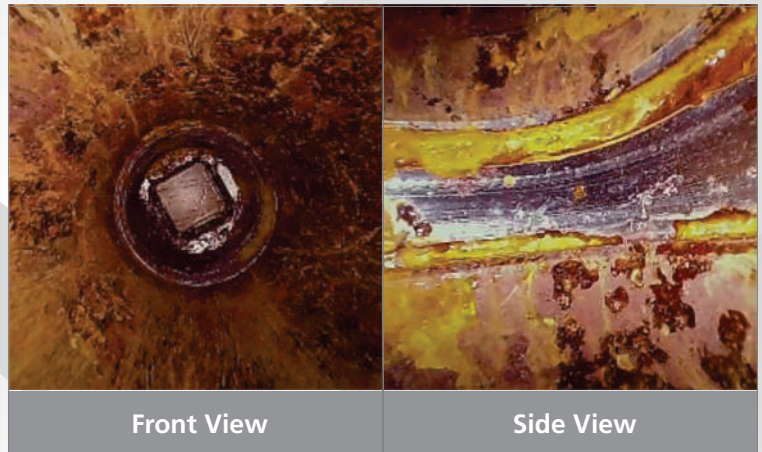
Side Camera



## Clear Vision & Sharp Photos

Nothing is more important than to have a clear view and sharp images during an inspection. That is why the 3.9 mm dual view boasts two powerful cameras that will give you a perfect overview and leave no flaw undetected.

- HD resolution
- Wide FOV of 120° (Dual View Probe) / 140° (Front View Probe)
- DOF of 5 mm~100 mm



Front View

Side View

## Maneuverability & Precision

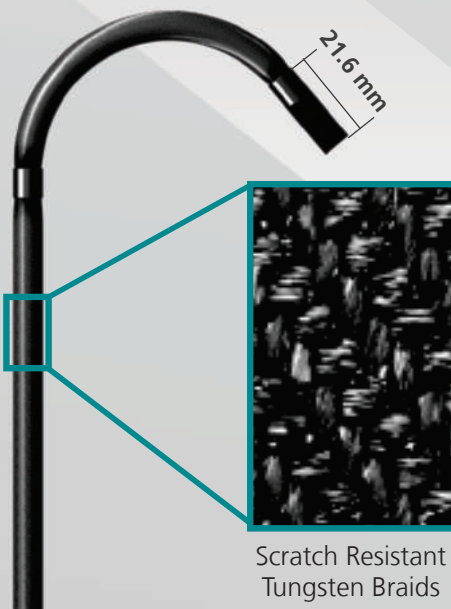
Our insertion probes are made to get to even the hardest-to-reach places, and the 3.9 mm dual view is no exception. It is highly flexible and small enough to reach your next inspection target with maximum efficiency and minimal effort.

- 3.9 mm probe head diameter
- 4 Way articulation
- Mechanical wiring (instant feedback & precise movements)
- Articulation up to 120° (or 140° for single front view probe)

## Tungsten Reliability

The 3.9 mm dual view probe has a protective tungsten braided outer layer. The strength and density of tungsten extend the probe lifespan significantly and make it waterproof as well as heat and scratch-resistant.

- IP67 level waterproof and oil proof
- 100°C heat resistance
- Unyielding to scratches and corrosion



Scratch Resistant  
Tungsten Braids



# Industrial VideoScope | X2000



**Clearness | Sharpness | Brightness**

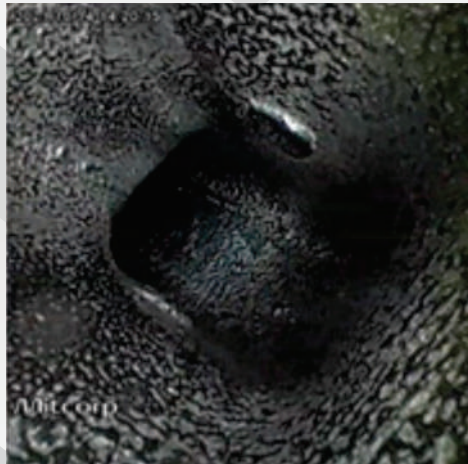
**2.8mm digital front view 1.5mm Probe | 4 Way Articulating**



## Bright & Clear Images

Inspect the smallest of bores and pipes with 2.8 mm scope does not compromise between high image quality for a small diameter. Expect sharp & clear images. The bright LEDs let you see clearly in dark spaces, and the wide FOV offers a great overview. And no more blurry images, thanks to the 3 mm -  $\infty$  DOF range!

- Resolution: 800 \* 800
- FOV: 120
- DOF: 3 mm ~  $\infty$



## Precise Movements:

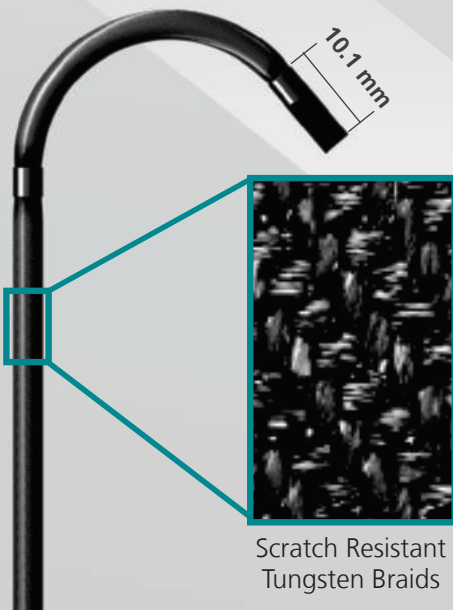
A short distal-end and four-way articulation ensure precise movements! Thanks to the small diameter, the bending radius is also small and allows you to reach your inspection target even in confined spaces.

- 4 Way articulation
- 110° bending angle
- 10.1 mm probe head length

## Tungsten Durability

The 2.8 mm dual view probe has a protective tungsten braided outer layer. The strength and density of tungsten extend the probe lifespan significantly and make it waterproof, heat and scratch-resistant.

- Tungsten-braided outer layer
- IP67 level waterproof and oil proof
- 80°C heat resistance
- Unyielding to scratches and corrosion





# Industrial VideoScope | X2000



**Clearness | Sharpness | Brightness**

**Each X2000 Kit Container:  
X2000 Control + Selected  
Articulated Probe Option, with the  
following accessories:**

**1. Monitor**

Quickly removable batteries; that provide 3 hours of operating each. 2XBatteries provided

**2. Probe Adapters:** The X2000 comes with a side View and Dual View Mirror adapter as well as a pin adapter for measurements.(Only for 6.0mm probe)

**3. Accessory Box:**

A variety of different power adapter are available to recharge your X2000. A mini-HDMI cable, EMI core\* 4 (detachable for USB or HOMI cable's connector ends), a cleaning Kit are part of the package.

**4. Rigid Sleeve:**

Rigid sleeve are available for 6.0mm and 3.9mm probes. Each rigid sleeve comes with and additional extender for the sleeve.

**5. Neck Strap:**

The X2000 comes with a detachable neck strap that can be easily attached or detached.

**6. Hard Carry Case:**

Hard Carry Case is dust, and waterproof. it is rugged and ensure that your X2000 stays safe during your travel or movement of equipment within your industrial areas.

**Image Measurement Software & PC Software for remote viewing through USB:** is included as part of package.







**Professional  
Grade  
Products**

**Best In Class  
Warranty  
Programmes**

**Product &  
Service  
Training**

**Regd. Office:**  
Asian Contec Ltd.  
Asian Centre, B-28, Okhla Industrial Area, Phase-1,  
New Delhi -110020, India.

**Contact Nos.:**  
Tel : +91-11-41860000 (100 Lines),  
Direct Sales Helpline : +91-11-41406926  
Web : [www.stanlay.in](http://www.stanlay.in) [www.stanlay.com](http://www.stanlay.com)  
email: [sales@stanlay.com](mailto:sales@stanlay.com)

**Works :**  
Asian Contec Ltd. 13/7,  
Mathura road, Faridabad, Haryana, India

**Regional Offices :**  
• Mumbai • Bengaluru • Hyderabad • Vadodara  
• Lucknow • Patna • Bhubaneshwar • Guwahati

**Sales Channel Locations:** • Chennai

**Catalogue Version : ST/X2000/2024-25**

[www.stanlay.in](http://www.stanlay.in)

**Quality  
Management  
System**

**ISO 9001: 2015**

**# 1-QSC202101102**

